

Challenge: Managing Risk of Supporting Multiple Complex distributed and multi-tier Applications

“MonitorEyeT Dashboard has out-of-box integration with financial system platforms, components and protocols such as ‘FIX’ and TIBCO making it easy to get it up and running very quickly, thereby reducing the cost of configuration and support.”

MonitorEyeT dashboard is a very flexible, powerful visual solution that provides monitoring of real-time information and controls distributed applications.

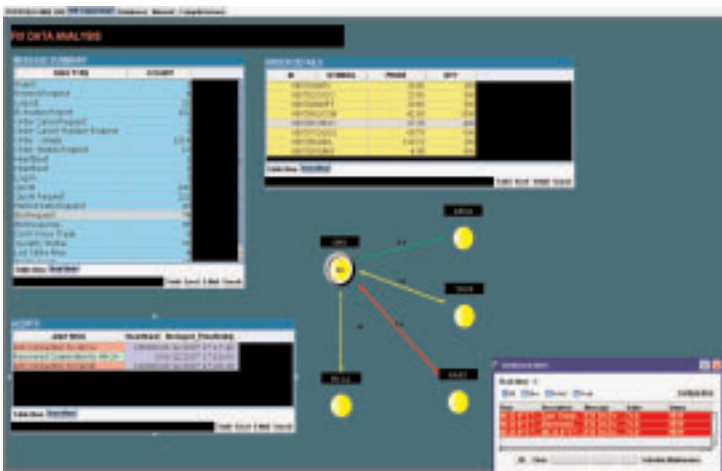
The objective of the product is to visually expose the architecture of critical operational components that can affect the service level of your enterprise infrastructure.

By providing real-time interpretation and correlation of elements, operational failures can be resolved by minimizing time consuming analysis and troubleshooting.

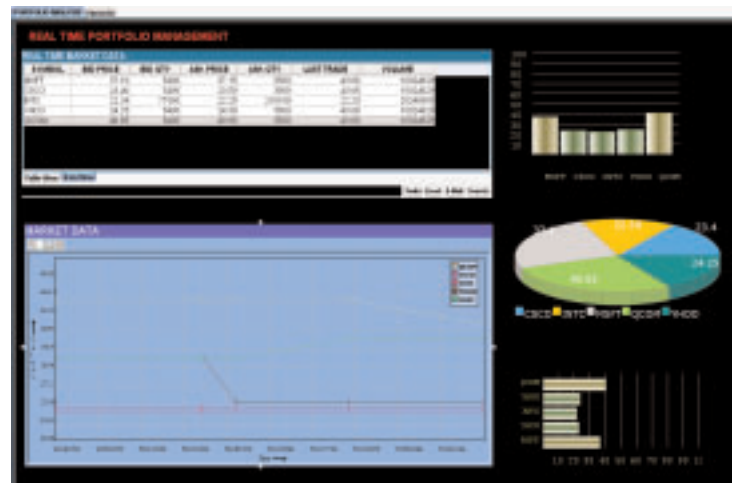
Solution

Dashboard is a component of *MonitorEyeT Infrastructure and Software Application Monitoring Suite* of products. Dashboard can also be deployed independently.

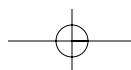
Promise of MonitorEyeT dashboard is to provide tactical, free-form, highly visible, proactive monitoring.



Electronic Connectivity



Market Data Monitoring





www.monitoreyet.com
 666 Plainsboro Rd.
 Suite 1161
 Plainsboro, NJ 08536
 Phone: 732-404-0100
 Product of DbCom
sales@monitoreyet.com

Supporting Various Industries and needs:

- Infrastructure
- Equities, Program Trading, Prime Brokerage
- Banking
- Pharmaceuticals

Sophisticated Features:

- Financial Industry Focus: In-built support and integration for FIX protocol.
- Market Data Monitoring: Allows monitoring of pricing data.
- Transaction Data Monitoring: Orders, Executions, etc. can be monitored.
- Latency, Queues and Heartbeats: Message delays can be monitored. Process status changes are alerted in a very efficient manner.
- Dynamic: Real-time data displayed dynamically with rule based visualization and alerting.
- Free-Form: Users can build their own dashboard in just a few minutes.
- Rapid Configuration: Users have the option to use existing architecture diagrams to build dashboards with transparent and active widgets to display data and alerts. These widgets can be configured with drag/drop and requires no coding.
- Powerful: Supports data sources such as TIBCO, Sybase, Oracle, SNMP and several others.
- Control: Applications, processes and application components can be controlled remotely.
- Access Control: User authentication and access control at various functional levels.
- Collaboration: Chat and Snapshot functionality allows users to communicate and send information such as screenshots to other users.

What does MonitorEyeT Dashboard offer?

- Consolidated Real-time monitoring for applications and infrastructure
- Automatic trouble isolation and escalation
- Powerful alert management with emails, audio alerts, popups, TIBCO messages
- Drill-down and correlation
- Agent-less infrastructure monitoring
- Interfaces to emails, outlook calendars/schedules, Excel, Wiki
- Quick design and implementation with drag and drop
- Instant deployment with no coding required
- Menu based configuration for data interfaces
- Your own images can be used to build overview dashboards
- Data adapters for messaging such as TIBCO, SNMP, Oracle, Sybase